

# Self-Adhesive Wallpaper

## Installation Guide

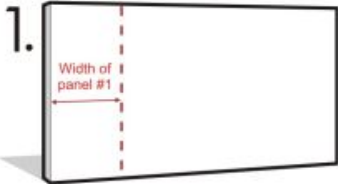
### Tools Needed



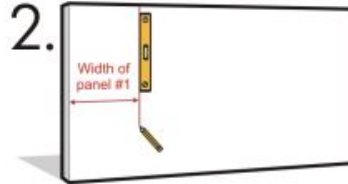
### Before you begin

1. We recommend to have two people for this wallpaper installation.
2. Always inspect the wallpaper for defects before you proceed.
3. Never install the wallpaper over existing wallpaper.
4. Never pre-trim the wallpaper - Your wall or ceiling line may be slightly off.
5. Never start pasting process until the wall surface has been properly prepared, all of the measurements have been double-checked and the necessary tools are on hand.

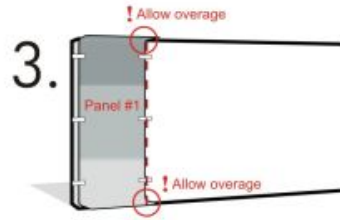
\* Images are for reference only.



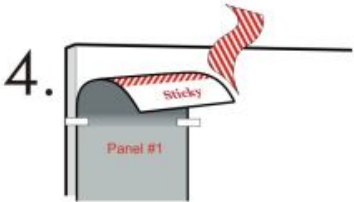
From the far end of your wall measure the width of panel #1.



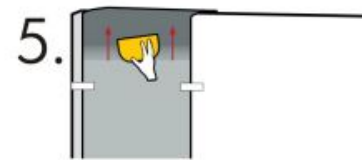
Draw a straight line using a spirit level or plumb line. Make sure it is straight line as this will be the reference line for all the rest of wallpaper panels.



Using masking tape, line the right hand edge of wallpaper (panel #1) to the line you have drawn. Wallpaper may have up to 1~2 inches bleed (extra image area) on each side of wallpaper panel. This overage is to accommodate irregular walls. Do not trim this overage yet.



Once you are lined up (make sure your tapes stay in place). Peel back about 300mm of the backing paper and cut it away.

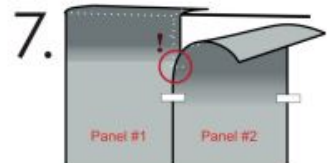


Working from the bottom to the top, smooth the sticky section into place. Do not trim the overage yet. Remove all of your tape.

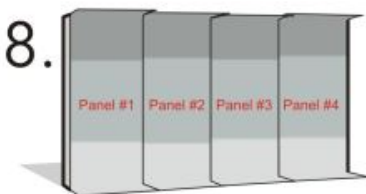


Do not peel off all the backing paper in one go. Remove it slowly, smoothing down and side to side as you go. Consider having another person hold the bottom of the wallpaper as you work your way down. Smooth the wrinkles and bubbles outward, until they are removed.

**TIP:** If bubbles capture in the middle of wallpaper, you may use sharp edge of the knife to remove air in the bubbles.



Align panel #2 to panel #1. When matching panel #2 to panel #1, there will be a 0.5"-2" overlap. This is correct. Simply match the pattern of wallpaper.  
**CAUTION:** Do not install the panels with edges butt together.



Repeat Step 7 for the rest of panels. You will have overlaps all around.



When all panels have been adhered, trim any ceiling and baseboard overage, using your knife and plastic spatula.

**CAUTION:** Go slowly and change the blades often for the best result.

# STICKJOY