

# Paper-Backed Wallpaper

## Installation Guide

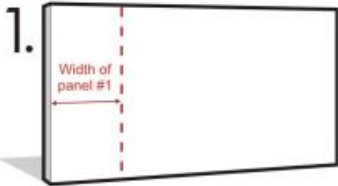
### Tools Needed



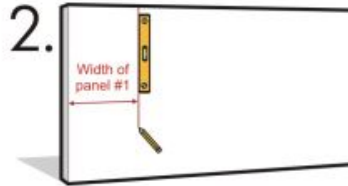
### Before you begin

1. We recommend to have two people for this wallpaper installation.
2. Always inspect the wallpaper for defects before you proceed.
3. Never install the wallpaper over existing wallpaper.
4. Never pre-trim the wallpaper - Your wall or ceiling line may be slightly off.
5. Never start pasting process until the wall surface has been properly prepared, all of the measurements have been double-checked and the necessary tools are at hand.

\* Pictures are for reference only



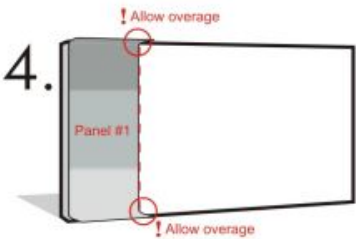
1. From the far end of your wall measure the width of panel #1\*.



2. Draw a straight line using a spirit level or plumb line. Make sure it is straight line as this will be the reference line for all the rest of wallpaper panels.



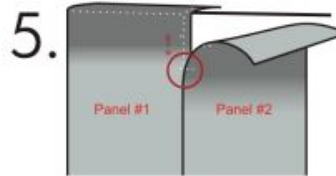
3. Apply paste to the back side of 1st panel. Take care not to miss any areas.



4. Line the right hand edge of wallpaper (panel #1) to the line you have drawn. Wallpaper may have up to 1~2 inches bleed (extra image area) on each side of wallpaper panel. This overage is to accommodate irregular walls. Do not trim this overage yet.

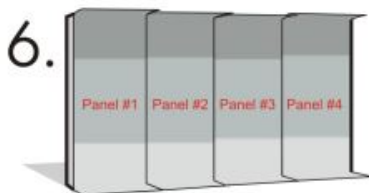
Using a clean damp sponge, gently press the panel against the wall, starting at the top. Smooth all wrinkles and bubbles outward, until they are removed. Professional installer prefer to use plastic spatula. Be careful, over pressure might hurt the surface of wallpaper.

**CAUTION:** Do not stretch the wallpaper while positioning.



5. Apply paste to panel #2. Align panel #2 to panel #1. When matching panel #2 to panel #1, there will be a 0.5"~2" overlap. This is correct. Simply match the pattern of wallpaper.

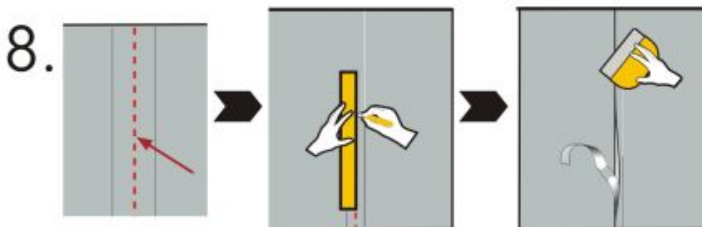
**CAUTION:** Do not install the panels with edges butt together.



Repeat Step 5 for the rest of panels. You will have overlaps all around.



When all panels have been adhered, trim any ceiling and baseboard overage, using your knife and plastic spatula. **CAUTION:** Go slowly and change the blades often for the best result.



Double-cut overlapping seams. Place your ruler in the middle of the overlap and cut thru both layers. Peel away the outer piece of excess material. Now peel away the remaining excess material underneath the overlap. Smooth the panels back together, so the edges now butt together. A seam adhesive can be applied to keep panel edges from curling. To remove any paste residue, wipe the mural, as well as the ceiling and baseboard molding, with a clean wet sponge.

\* In most of the case, you can find the measurement of each panel at the bottom of the wallpaper. But we recommended you measure it with a measurement tape make sure the reading is accurate.